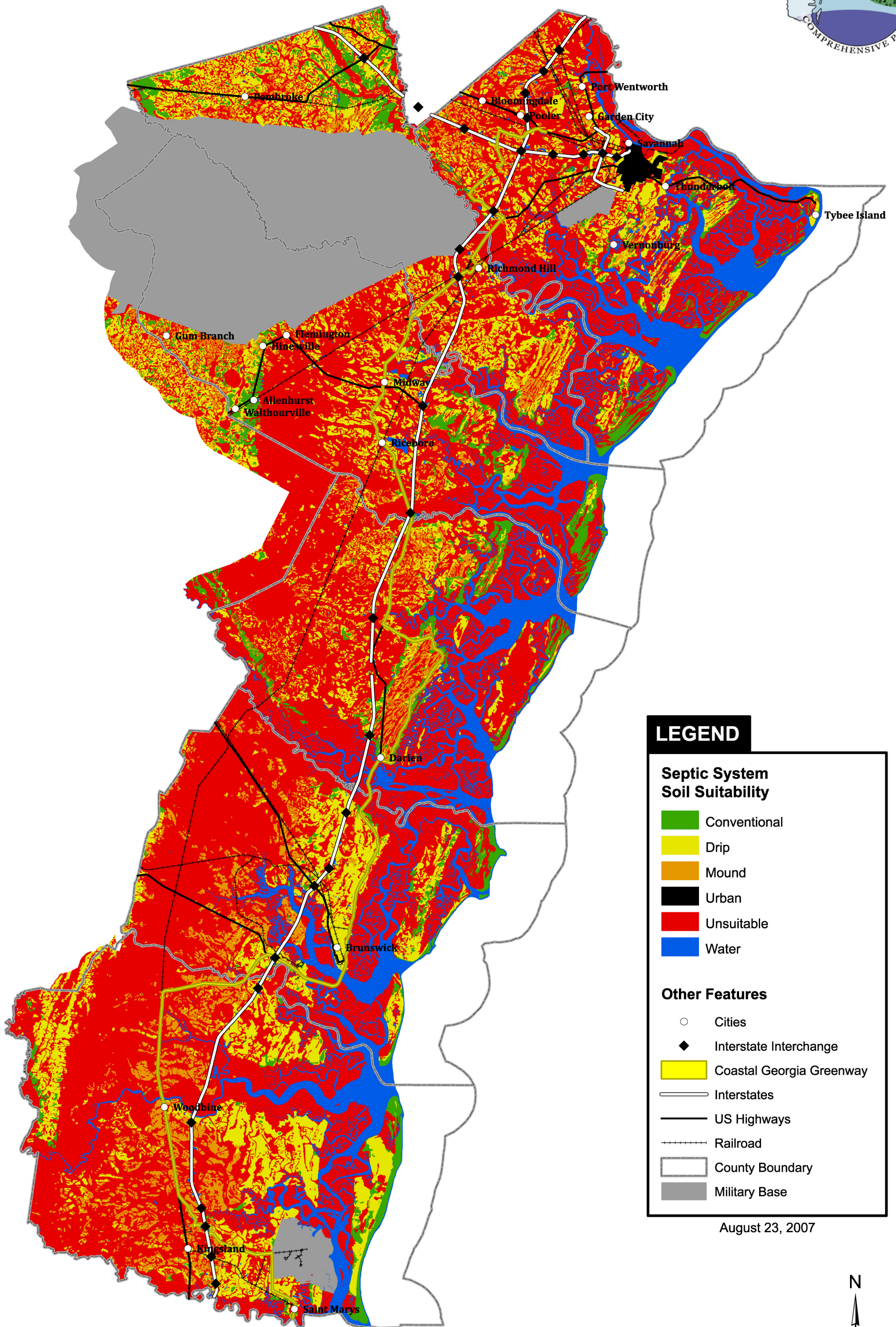


Soil Suitability for Common Onsite Wastewater Treatment System Designs



LEGEND

Septic System Soil Suitability

- Conventional
- Drip
- Mound
- Urban
- Unsuitable
- Water

Other Features

- Cities
- Interstate Interchange
- Coastal Georgia Greenway
- Interstates
- US Highways
- Railroad
- County Boundary
- Military Base

August 23, 2007



1:475,000
1 inch equals 7.5 miles

Source: University of Georgia Department of Crop and Soil Sciences, 2007
Based on data from the Soil Survey Geographic (SSURGO) database